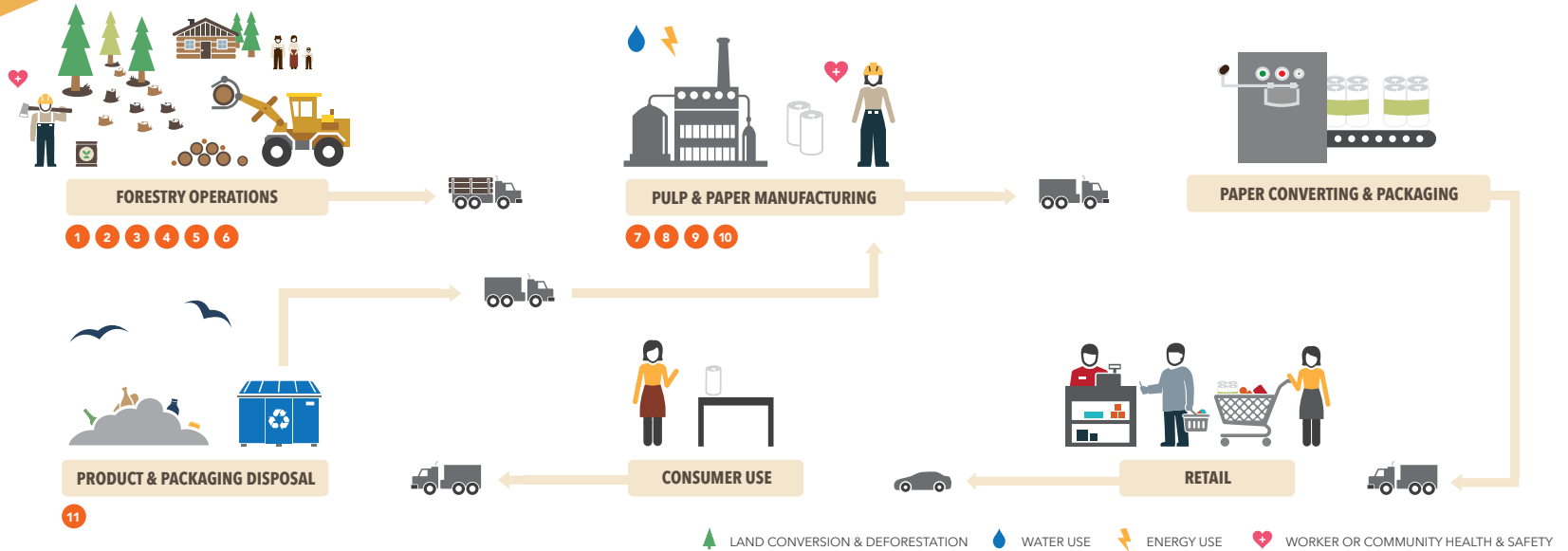




HOUSEHOLD PAPERS

SUPPLY CHAIN HOTSPOTS

START



HOTSPOTS

- 1 Community rights – Forestry operations:** Local communities can be negatively affected by forestry operations due to loss of land use, timber rights, and cultural heritage.
- 2 Illegal logging – Forestry operations:** Harvesting timber illegally may lead to biodiversity loss and impact land rights of local communities.
- 3 Labor rights – Wood sourcing:** Forestry operations may use child labor, as well as violate other labor rights.
- 4 Land conversion and deforestation – Forestry operations:** Ineffective forest management can lead to environmental impacts and climate change from deforestation.
- 5 Pesticide application – Wood sourcing:** Improper pesticide use can impact biodiversity, water quality, and human health.
- 6 Worker health and safety – Forestry operations:** Workers can develop serious health problems from poor working and living conditions in addition to physical injury from other occupational hazards.
- 7 Chemical use – Pulp production:** Chemicals used for pulping and bleaching can pollute the environment.
- 8 Energy consumption – Pulp and paper production:** Energy generated to power manufacturing processes can cause climate change, damage the environment, deplete resources and impact human health.
- 9 Water use – Pulp production:** Water use during pulp and paper manufacture can deplete freshwater resources.
- 10 Worker health and safety – Pulp:** Workers can develop serious health problems from exposure to the chemicals used to make pulp and paper and physical injury from other occupational hazards.
- 11 Packaging disposal – Resource impacts:** Packaging material with low recovery rates, like poly film, result in depletion of resources and environmental and social impacts from extracting raw materials.

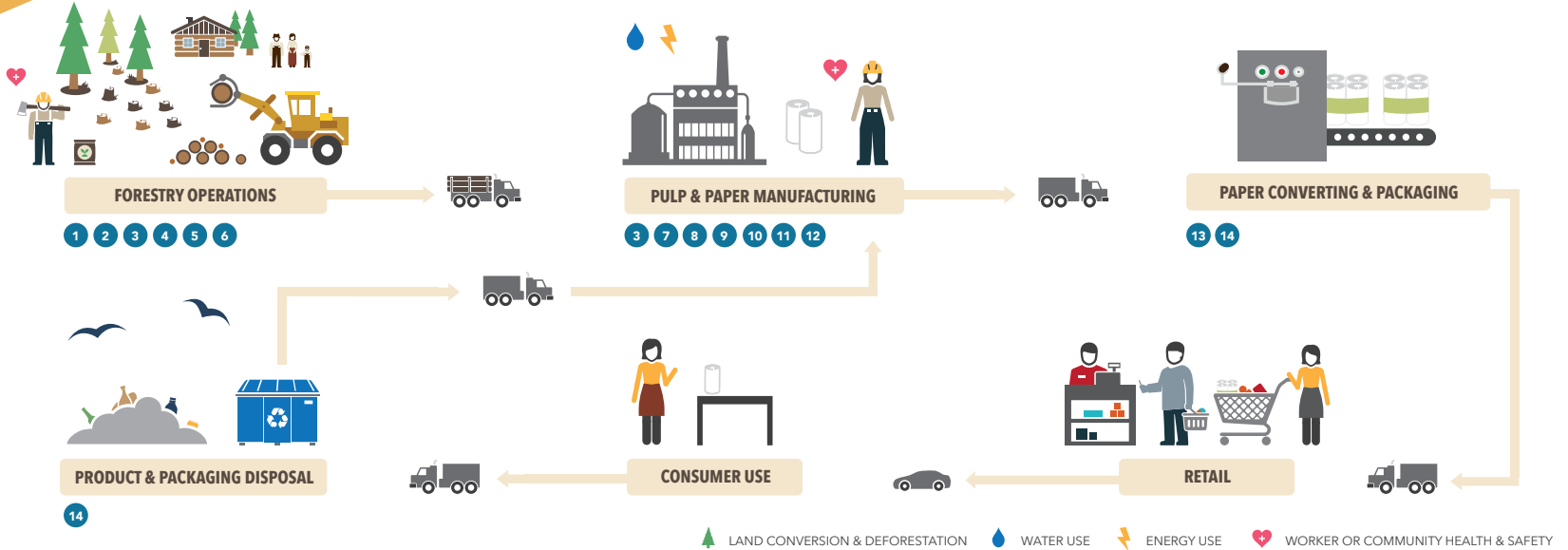


HOUSEHOLD PAPERS

SUPPLY CHAIN KEY PERFORMANCE INDICATORS



START



KEY PERFORMANCE INDICATORS

<p>1 Certification – Virgin fiber sourcing</p> <p>CORRESPONDS TO HOTSPOT(S):</p> <p>1 5</p>	<p>2 Community rights – Virgin fiber sourcing</p> <p>CORRESPONDS TO HOTSPOT(S):</p> <p>1</p>	<p>3 Fiber composition</p> <p>CORRESPONDS TO HOTSPOT(S):</p> <p>1</p>	<p>4 Land conversion and deforestation – Virgin fiber sourcing</p> <p>CORRESPONDS TO HOTSPOT(S):</p> <p>1</p>	<p>5 Legality – Virgin fiber sourcing</p> <p>CORRESPONDS TO HOTSPOT(S):</p> <p>1 5 7</p>
<p>6 Protection of biological diversity – Virgin fiber sourcing</p> <p>CORRESPONDS TO HOTSPOT(S):</p> <p>1 7</p>	<p>7 Air and wastewater emissions</p> <p>CORRESPONDS TO HOTSPOT(S):</p> <p>1</p>	<p>8 Bleaching chemicals – Pulp production</p> <p>CORRESPONDS TO HOTSPOT(S):</p> <p>2 7</p>	<p>9 Greenhouse gas emissions – Pulp production</p> <p>CORRESPONDS TO HOTSPOT(S):</p> <p>3</p>	<p>10 Greenhouse gas emissions – Final manufacture</p> <p>CORRESPONDS TO HOTSPOT(S):</p> <p>4</p>
<p>11 Water use – Pulp production</p> <p>CORRESPONDS TO HOTSPOT(S):</p> <p>6</p>	<p>12 Worker health and safety – Final product manufacture</p> <p>CORRESPONDS TO HOTSPOT(S):</p> <p>8</p>	<p>13 Sustainable packaging design</p> <p>CORRESPONDS TO HOTSPOT(S):</p> <p>9</p>	<p>14 Packaging raw material sourcing and end-of-life</p> <p>CORRESPONDS TO HOTSPOT(S):</p> <p>9</p>	